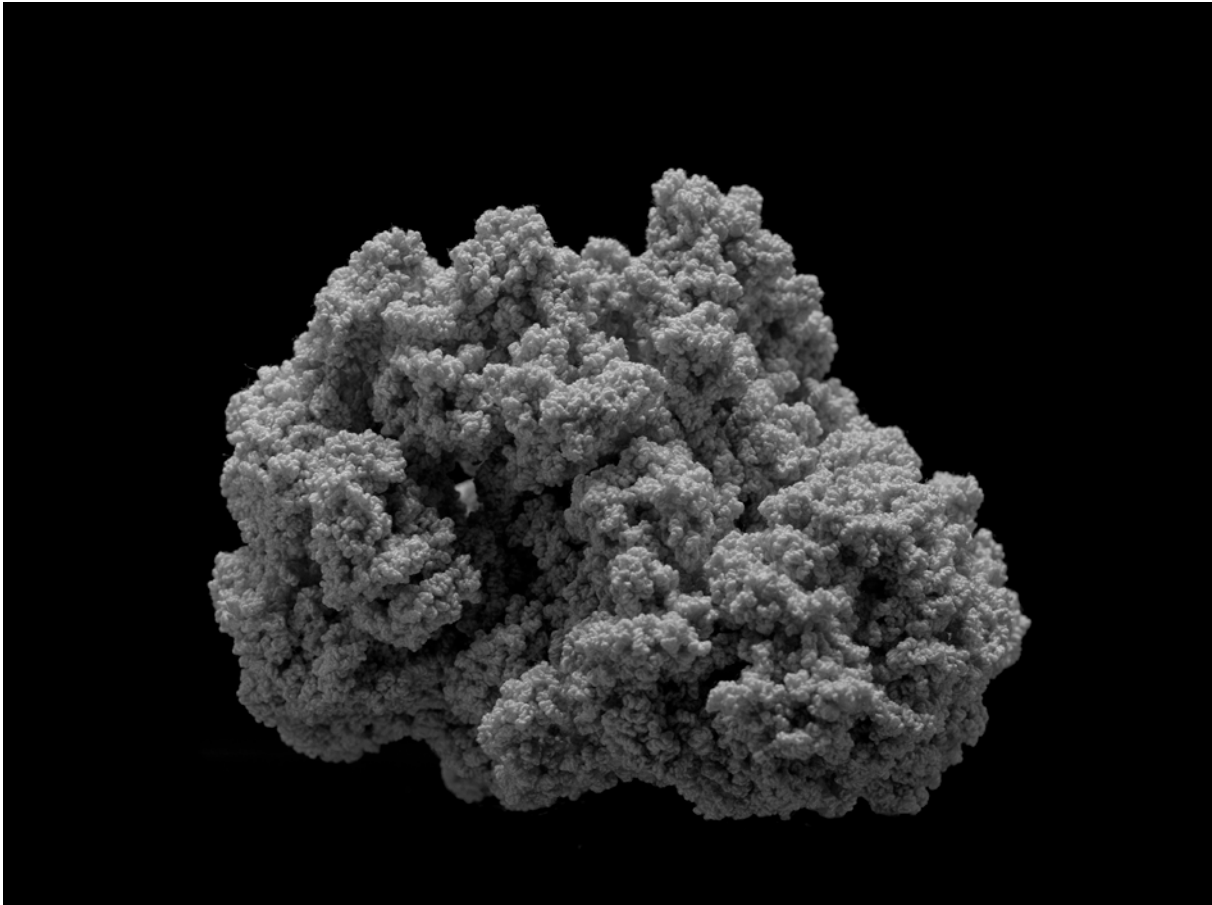


PRESS RELEASE

August 4, 2014

**N. DASH, DAVID KEATING, JENS RISCH, FRED SANDBACK**

September 4 - October 31, 2014



Jens Risch, *Silk Piece V*, 2011 - 2012. 1000 m silk, white. 8,5 x 6,5 x 8,2 cm  
I knot a thread until no other knot can be added.

*Opening reception: Wednesday, September 3rd, from 6:00 to 9:00 pm*

Bischoff Projects  
Hanauer Landstrasse 20 - 22  
D-60314 Frankfurt am Main

Hours: Tue - Fri 1 - 6:30, Sat 11 - 2 & by appointment

**Bischoff Projects** is pleased to announce an exhibition of works by **N. Dash, David Keating, Jens Risch, and Fred Sandback** that discover line through the means of the string. Fragile and permeable, the works on view achieve volume and presence not with mass, but rather by using the contours of their impressionable materials. These four artists recast line as a means to measure the faintest presences of time, gravity, and space through works of sculpture, mixed media, and installation.

The influential Minimal works of **Fred Sandback** sought sculptural definition without interiority – mere line itself could gesture at space and depth. As the artist wrote in 1975, “the line is a whole, an identity, for a particular place and time.” An untitled work of acrylic yarn circa 1972 activates the gallery walls as viable sculpture, with four parallel blue and green lines stretched tightly across two perpendicular walls. The corner is recast from containment to sculpture, art’s confines expanded into a site of art making.

**Jens Risch’s** work explores this idea’s inverse, compressing the possibilities of the line into definition. Risch uses hundreds of meters of silk to create his small and globular sculptures, which represent months and even years of diligent knotting by the artist. Here, too, the line signifies time, but Risch rather draws our attention to our ability to master it, though such control inevitably yields unpredictable, organic results. Risch conjures mass from what is almost ephemeral– by disrupting the string rather than following the through line of his material, the artist creates unexpected gravity.

In a new series of untitled work by **N. Dash**, strings neither support nor attach any foreign object, but rather, they become the focus of tension themselves, embedded along and across bare handmade sheets of paper. Dash’s work often references architecture and with these pieces, the structure of the paper provides both the housing and plane for the line. As Sandback offered empty space between his lines as material so does Dash present these works as space to be measured.

The work of **David Keating** also gestures at such juxtaposition in three dimensions, dealing with the interplay between the taut and the slack. Rigid steel lines have been set off by sagging colorful ropes that twist and attach to the structural components of the work while subtly changing hue. As these structural forms define how the viewer moves through the space, so do these ropes redefine that relationship, suggesting that such supports can also serve as leverage for looser, animated forms.

These four artists challenge the singularity of the line by stretching or compressing its definition through their work – the string here transforms from practical instrument into probe for mystery, revealing relationships otherwise barely perceptible.

**N. Dash** was born in 1980 in Miami Beach, USA, and lives and works in New York and New Mexico, USA. Selected solo exhibitions include „N. Dash“ at Hammer Museum, Los Angeles, USA (2014); „N. Dash“ at White Flag Projects, St. Louis, USA (2013); „N. Dash“ at Untitled, New York, USA (2012). Major group exhibitions include „The Possible“ at Berkeley Art Museum, Berkeley, USA (2014); „The Independent: Dreams That Money Can’t Buy“ at Maxxi Museum, Rome, Italy (2014); „Painting in Place“ at Farmers and Merchants Bank presented by Los Angeles Nomadic Division, Los Angeles, USA (2013); „My Crippled Friend“ at Columbus College of Art and Design, Columbus, USA (2013); „Notations: Contemporary Drawing as Idea and Process“ at Kemper Art Museum, Washington University, St. Louis, USA (2012); „Transient Response / Land Tender“ at High Desert Test Sites, Joshua Tree, USA (2011).

**David Keating** was born in 1977 in Melbourne, Australia, and lives and works in Berlin, Germany. Selected solo exhibitions include „David Keating: Endless Nameless“ at Kunsthaus Baselland, Muttentz/Basel, Switzerland (2014); „David Keating: Passage“ at RaebervonStenglin, Zürich, Switzerland (2012); „David Keating & Molly Zuckerman-Hartung: Hysterical Sublime“ at Spazio Cabinet, Milan, Italy (2011); „David Keating & Dan Rees: Chutzpah“ at Kinderhook & Caracas, Berlin, Germany (2011); „David Keating: Sequence and descending“ at RaebervonStenglin, Zürich, Switzerland (2010); „David Keating: I like for you to be still“ at The Taut and Tame, Berlin, Germany (2010). Major group exhibitions include „Als Moriandi mit der Kinematographie liebäugelte“ at Supportico Lopez, Berlin, Germany (2012); „Drop Handkerchief Backdrop“ at 1857, Oslo, Norway (2011); „Warm Summer Days Indoors“ at Sandy Brown, Berlin, Germany (2009); „Show Me, Don't Tell Me“ at Witte de With Center for Contemporary Art, Brussels Biennial 1, Brussels, Belgium (2008); „Tales from the Travel Journal Vol. 1“ at Contemporary Art Centre, Vilnius, Lithuania (2007).

**Jens Risch** was born in 1973 in Rudolstadt, Germany, and lives and works in Berlin, Germany. Selected solo exhibitions include "Jens Risch: Silk Piece V, 2011 - 2012" at Bischoff Projects, Frankfurt am Main, Germany (2014); "Jens Risch: Seidenstueck I & Seidenstueck II (Erster Teil)" at Weissfrauen Diakoniekirche, Frankfurt am Main, Germany (2007). Major group exhibitions include "Netz" at Kunsthalle zu Kiel, Kiel, Germany (2014); "Art & Textiles" at Kunstmuseum Wolfsburg, Wolfsburg, Germany (2013); "Thomas Bayrle, Juergen Krause, Michael Riedel, Jens Risch, Peter Roehr" at Bischoff Projects, Frankfurt am Main, Germany (2012); "As Soon As Possible, Tempo e accelerazione sociale" at Centre for Contemporary Culture Strozzi, Florence, Italy (2010); "Alle Zeit der Welt" at Kunsthalle Mainz, Mainz, Germany (2008); "Family and Friends" at Centre d'art contemporain, Brétigny, France (2007). Jens Risch's first exhibition with Bischoff Projects was in 2010.

About **Fred Sandback** (1943-2003). Sandback's work has been exhibited internationally since the late 1960s. His first solo shows were held at Konrad Fischer Galerie, Duesseldorf, and Galerie Heiner Friedrich, Munich, both in 1968, followed by an exhibition at Dwan Gallery, New York, in 1969, while the artist was still a graduate student at Yale School of Art and Architecture. His work is on permanent display at Dia:Beacon, New York, and was the subject of an extensive survey exhibition organized in 2005 by the Kunstmuseum Liechtenstein, Vaduz (which traveled to the Fruitmarket Gallery, Edinburgh and the Neue Galerie am Joanneum, Graz, in 2006). In 2011, the artist's work was featured in a solo exhibition at the Whitechapel Gallery, London, and the Museum of Contemporary Art, Denver, dedicated its entire building to a solo exhibition. Sandback's work is represented in many public collections including the Musée National d'Art Moderne, Centre Georges Pompidou, Paris, Museo Nacional Centro de Arte Reina Sofía, Madrid, The Museum of Modern Art, New York, Museum fuer Moderne Kunst, Frankfurt am Main, National Gallery of Art, Washington, D.C., Solomon R. Guggenheim Museum, New York, Pinakothek der Moderne, Munich, and The Art Institute of Chicago.

**Currently on view / upcoming:**

**ABC - Art Berlin Contemporary**

September 18 - 21, 2014

Berlin, Germany

**ArtRio**

September 10 - 14, 2014. Pavillon 2, Booth V13.

Rio de Janeiro, Brazil

**Jens Risch: Netz (group show)**

July 28 - November 16, 2014

Kunsthalle zu Kiel, Kiel, Germany

**Daniel Turner: Clear (group show)**

July 25 - August 22, 2014

Gagosian Gallery, Beverly Hills, USA

**Juergen Krause: Deltabeben (group show)**

July 20 - August 31, 2014

Kunstverein Ludwigshafen, Ludwigshafen, Germany

**Michael Riedel: Infinite Jest (group show)**

June 5 - September 7, 2014

Schirn Kunsthalle, Frankfurt am Main, Germany

**Michael Riedel: Dual air [Dürer]**

On long-term view

Palais de Tokyo, Paris, France

For all other information please contact the gallery at [info@bischoffprojects.com](mailto:info@bischoffprojects.com) or at +49 (0)178 924 32 50.